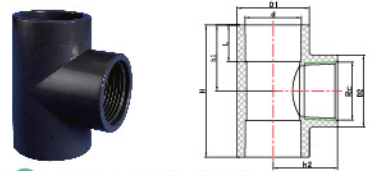


ITEM NO: US6E03

FEMALE ELBOW

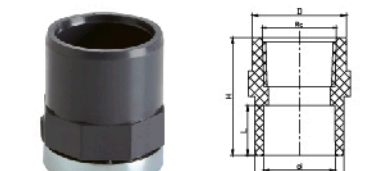
Nom Size	D1	D2	d	L	h1	h2	Rc
20X1/2"	28.6	28.6	20	16.5	28	28.5	1/2"
25X1/2"	33	28.6	25	19.5	31.5	31.5	1/2"
25X3/4"	35.1	35.1	25	19.5	34	33	3/4"
32X1/2"	41.3	29.6	32	22.5	34.5	35	1/2"
32X3/4"	41.3	35	32	22.5	37	36.5	3/4"
32X1"	44.3	44.3	32	22.5	40	40.5	1"
40X1 1/4"	52.4	52.4	40	26.5	49	46.5	1 1/4"
50X1 1/2"	61	61	50	31.5	56.5	52	1 1/2"
63X2"	75.9	75.9	63	38.5	69	63	2"
75X2 1/2"	89.8	89.8	75	44.5	83	74.5	2 1/2"
90X3"	107.8	107.8	90	51.5	96.5	84	3"
110X4"	135.5	135.5	110	61.5	119	105.5	4"



ITEM NO: US6T03

FEMALE TEE

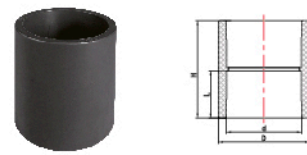
Nom Size	D1	D2	d	L	h1	h2	H	Rc
20X1/2"	28.6	28.6	20	16.5	27.5	29	55	1/2"
25X1/2"	33	28.6	25	19.5	30.5	31.5	61	1/2"
25X3/4"	34.2	34.2	25	19.5	33	33.5	66	3/4"
32X1/2"	41.3	29.6	32	22.5	34	35	68	1/2"
32X3/4"	41.3	35	32	22.5	36.5	36.5	73	3/4"
32X1"	42.3	42.3	32	22.5	40	40	80	1"
40X1 1/4"	52.4	52.4	40	26.5	47.5	46.5	95	1 1/4"
50X1/2"	61	27.7	50.4	31.5	42.5	44.8	85	1/2"
50X1 1/2"	61	61	50	31.5	55.5	51.5	111	1 1/2"
63X1/2"	75.9	27.7	63.4	38.5	49.5	52.3	99	1/2"
63x3/4"	75.9	34.2	63.4	38.5	52.5	53.8	105	3/4"
63X2"	75.9	75.9	63	38.5	68.5	62	137	2"
75X2 1/2"	89.8	89.8	75	44.5	83	73.5	166	2 1/2"
90X3"	107.8	107.8	90	51.5	96.5	84	193	3"
110X4"	135.5	135.5	110	61.5	119	100	238	4"



ITEM NO: US6021

FEMALE ADAPTOR M/F

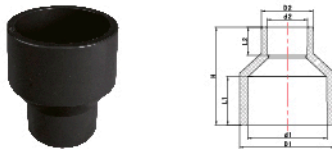
Nom Size	D	D1	d	L	H	Rc
25X20X3/4"	31.8	24.9	20.2	17	43	3/4"
32X25X3/4"	31.8	31.5	25.6	19.5	43	3/4"
40X32X1"	42.3	40	32.3	22.5	53	1"



ITEM NO: US6003

COUPLING

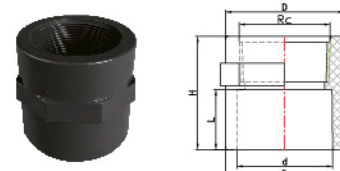
Nom Size	D	d	L	H
20	27	20	16.5	35
25	33	25	19.5	41
32	41.3	32	22.5	47
40	50.4	40	26.5	55
50	61	50	31.5	65
63	75.9	63	38.5	80
75	89.8	75	44.5	92
90	107.8	90	51.5	107
110	131	110	61.5	128
160	188	160	86.5	180



ITEM NO: US6004

REDUCING COUPLING

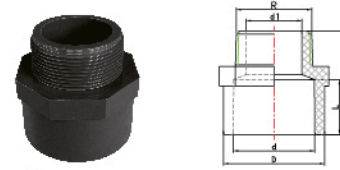
Nom Size	D1	d1	L1	D2	d2	L2	H
25x20	33	25	19.5	27	20	16.5	43
32x20	41.3	32	22.5	27	20	16.5	48
32x25	41.3	32	22.5	33	25	19.5	50
40x20	50.4	40	26.5	27	20	16.5	52
40x25	50.4	40	26.5	33	25	19.5	56
40x32	50.4	40	26.5	41.3	32	22.5	59
50x20	61	50	31.5	27	20	16.5	62
50x25	61	50	31.5	33	25	19.5	65
50x32	61	50	31.5	41.3	32	22.5	67
50x40	61	50	31.5	50.4	40	26.5	72
63x25	75.9	63	38.5	33	25	19.5	75
63x32	75.9	63	38.5	41.3	32	22.5	78
63x40	75.9	63	38.5	50.4	40	26.5	82
63x50	75.9	63	38.5	61	50	31.5	87
75x40	89.8	75	44.5	50.4	40	26.5	90
75x50	89.8	75	44.5	61	50	31.5	96
75x63	89.8	75	44.5	75.9	63	38.5	101
90x40	107.8	90	51.5	50.4	40	26.5	105
90x50	107.8	90	51.5	61	50	31.5	108
90x63	107.8	90	51.5	75.9	63	38.5	115
90x75	107.8	90	51.5	89.8	75	44.5	118
110x63	131	110	61.5	75.9	63	38.5	130
110x75	131	110	61.5	89.8	75	44.5	134
110x90	131	110	61.5	107.8	90	51.5	139
160x110	188	160	86.5	131	110	61.5	190



ITEM NO: US6011

FEMALE ADAPTOR

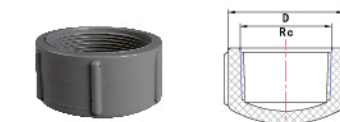
Nom Size	D	d	L	H	Rc
20X1/2"	28.6	20	16.5	35.5	1/2"
25X3/4"	34	25	19.5	40	3/4"
32X1"	42.3	32	22.5	46.6	1"
40X1 1/4"	51.4	40	26.5	54.5	1 1/4"
50X1 1/2"	62.5	50	31.5	59.5	1 1/2"
63X2"	77.4	63	38.5	71.5	2"
75X2 1/2"	91.3	75	44.5	80.5	2 1/2"
90X3"	109.8	90	51.5	90.5	3"
110X4"	133	110	61.5	107	4"



ITEM NO: US6012

MALE ADAPTOR

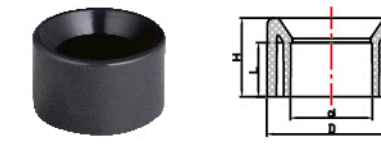
Nom Size	D	d	d1	L	H	R
20X1/2"	28.6	20	12	16.5	38.5	1/2"
20X3/4"	28.5	20.3	17	18	40	3/4"
25X3/4"	34	25	17	19.5	44	3/4"
25X1"	34	25.8	22	21.5	47.5	1"
32X1 1/4"	42.3	32.3	29	25	54.5	1 1/4"
32X1"	42.3	32	22	22.5	52.5	1"
40X1 1/4"	51.4	40	30	26.5	58	1 1/4"
40X1 1/2"	51.4	40.4	34.5	28	58	1 1/2"
50X1 1/2"	62.5	50	34.5	31.5	64	1 1/2"
50X2"	62.5	50.4	44.4	34	68	2"
63X2"	77.4	63	44.4	38.5	74	2"
75X2 1/2"	91.3	75	57.7	44.5	83.5	2 1/2"
90X3"	109.8	90	66.7	51.5	98.5	3"
110X4"	133	110	88.7	61.5	116.5	4"



ITEM NO: US6017

FEMALE CAP

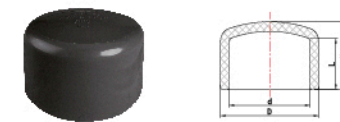
Nom Size	D	H	Rc
20X1/2"	28.6	24	1/2"
25X3/4"	35.2	26	3/4"
32X1"	43.3	32	1"
40X1 1/4"	53	35	1 1/4"
50X1 1/2"	59.4	36.2	1 1/2"
63X2"	73	42.6	2"
75x2 1/2"	89.8	56	2 1/2"
90x3"	107.8	64	3"
110x4"	133.5	73	4"



ITEM NO: US6005

REDUCING RING

Nom Size	D	d	L	H
25x20	25	20	16.5	19.5
32x20	32	20	16.5	22.5
32x25	32	25	19.5	22.5
40x20	40	20	16.5	26.5
40x25	40	25	19.5	26.5
40x32	40	32	22.5	26.5
50x20	50	20	16.5	31.5
50x25	50	25	19.5	31.5
50x32	50	32	22.5	31.5
50x40	50	40	26.5	31.5
63x25	63	25	19.5	38.5
63x32	63	32	22.5	38.5
63x40	63	40	26.5	38.5
63x50	63	50	31.5	38.5
75x50	75	50	31.5	44.5
75x63	75	63	38.5	44.5
90x50	90	50	31.5	51.5
90x63	90	63	38.5	51.5
90x75	90	75	44.5	51.5
110x63	110	63	38.5	61.5
110x75	110	75	44.5	61.5
110x90	110	90	51.5	61.5
160x90	160	90	51.5	86.5
160x110	160	110	61.5	86.5



ITEM NO: US6016

END CAP

Nom Size	D	d	L	H
20	27	20	16.5	21.5
25	33	25	19.5	26
32	41.3	32	22.5	31
40	50.4	40	26.5	36
50	61	50	31.5	42
63	75.9	63	38.5	51
75	89.8	75	44.5	59
90	107.8	90	51.5	68
110	131	110	61.5	81.5